



GMT ENGINEERS

presents

HPB-S : 2 AXIS SERVO CONTROLLED HYDRAULIC PRESS BRAKE



GMT ENGINEERS



YOUR PARTNER IN PROGRESS

BACK GAUGE

AN ADJUSTABLE STOP POSITIONED BEHIND THE BENDING DIE THAT HELPS POSITION THE WORK PIECE ACCURATELY FOR EACH BEND, OUR PRESS BRAKES FEATURES SERVO MOTOR MOTORIZED BACK GAUGES THAT CAN BE PROGRAMMED TO MOVE AUTOMATICALLY ON HIGH QUALITY BALL SCREWS AND LM GUIDE WAYS WHICH FURTHER ENHANCES PRECISION AND EFFICIENCY.

HYDRAULIC SYSTEM

UTILIZES HYDRAULIC POWER WITH A STRONG HYDRAULIC POWER PACK AND RELIABLE HYDRAULIC ELEMENTS FROM REPUTED COMPANIES TO APPLY FORCE FOR BENDING OPERATIONS. THIS SYSTEM ENSURES CONSISTENT AND PRECISE BENDING WITH HIGH FORCE CAPABILITIES.

FRAME AND STRUCTURE

TYPICALLY MADE OF HEAVY-DUTY STEEL TO WITHSTAND THE IMMENSE FORCE EXERTED DURING BENDING OPERATIONS. THE FRAME PROVIDES STABILITY AND RIGIDITY TO ENSURE ACCURATE BENDING, THE MACHINE IS STRESS RELIEVED AND MACHINED ON HIGH ACCURACY FLOOR BORING MACHINES.

HYDRAULIC CYLINDER(S)

THESE CYLINDERS ARE RESPONSIBLE FOR APPLYING FORCE TO THE RAM, WHICH IN TURN BENDS THE METAL. THEY ARE CONTROLLED BY THE HYDRAULIC SYSTEM AND CAN EXERT VARYING LEVELS OF FORCE DEPENDING ON THE REQUIREMENTS OF THE BENDING OPERATION, BY USING HIGH QUALITY SEALS THESE MACHINES OPERATE LEAK FREE FOR MANY YEARS OF OPERATION.

RACK AND PINION SYSTEM

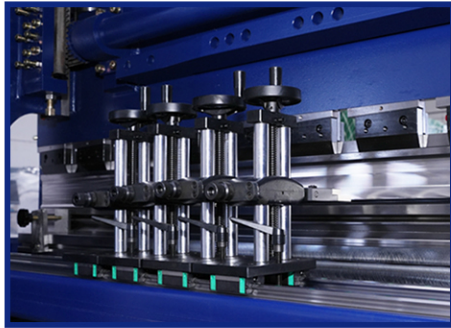
AN NC PRESS BRAKE IS RELIANT ON THE TORSION TUBE TO ENSURE THE RAM PARALLELISM, OUR HPB-S MACHINES HAVE A UNIQUE TORSION TUBE SYSTEM WHICH CONSISTS OF A HARDENED RACK AND PINION SYSTEM WITH HI ALLOY LINERS TO ENSURE THAT THE PARALLELISM IS MAINTAINED, THIS IS FAR SUPERIOR TO THE CURRENT MARKET PRACTICE OF USING LINK TYPE TORSION OR BALL JOINTED TORSION MECHANISM.

TOOLING

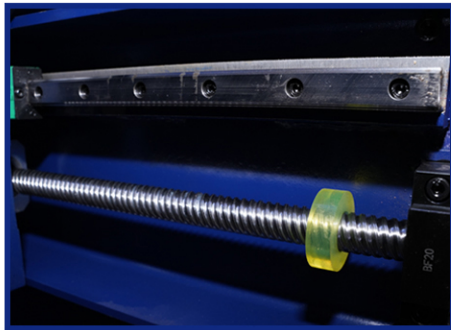
PRESS BRAKE TOOLING, SUCH AS PUNCHES AND DIES, IS ESSENTIAL FOR BENDING OPERATIONS. HYDRAULIC PRESS BRAKES TYPICALLY ACCOMMODATE A WIDE RANGE OF TOOLING OPTIONS TO ACCOMMODATE DIFFERENT BENDING REQUIREMENTS.

Model	Nominal Pressure (KN)	Length of Table (mm)	Distance between columns (mm)	Throat Depth (mm)	Stroke (mm)	Stroke Adjustment (mm)	Open Height (mm)	Strokes (min-1)	Main Motor (Kw)	Weight (kg)	Overall Dimensions (LXWXH in mm)
30X1250	300	1250	900	200	80	60	280	≥15	4	1100	1450X1350X1800
30X1500	300	1500	1000	200	80	60	280	≥15	4	1300	1700x1350x1800
30X1600	300	1600	1050	200	80	60	280	≥15	4	1500	1800X1350X1800
30X2000	300	2000	1400	200	80	60	280	≥15	4	1700	2300x1350x1800
40X1250	400	1250	900	230	100	80	320	≥11	5.5	1800	1450x1350x1910
40X1500	400	1500	1050	230	100	80	320	≥11	5.5	2100	1700x1350x1910
40X2000	400	2000	1400	230	100	80	320	≥11	5.5	2600	2200x1350x1910
40X2200	400	2200	1850	230	100	80	320	≥11	5.5	2700	2400x1200x1910
40X2500	400	2500	2000	230	100	80	320	≥11	5.5	3000	2700x1200x1910
40X3200	400	3200	2600	230	100	80	320	≥11	5.5	4000	3500x1200x1910
63X1250	630	1250	900	250	100	80	320	≥10	5.5	2000	1600x1500x2200
63X1500	630	1500	1050	250	100	80	320	≥10	5.5	2500	1800x1500x2200
63X2000	630	2000	1400	250	100	80	320	≥10	5.5	3200	2250x1500x2200
63X2500	630	2500	2000	250	100	80	320	≥10	5.5	4000	2700x1300x2200
63X3200	630	3200	2600	250	100	80	320	≥10	5.5	4800	3500x1300x2200
80X2500	800	2500	2000	300	100	80	350	≥10	7.5	4700	2700x1400x2300
80X3200	800	3200	2600	320	100	80	350	≥8	7.5	5300	3500x1500x2300
80X4000	800	4000	3100	320	100	80	350	≥8	7.5	6200	4200x1500x2300
100X2500	1000	2500	2000	320	120	100	380	≥8	7.5	5300	2700x1600x2400
100X3200	1000	3200	2600	320	120	100	380	≥8	7.5	5800	3500x1600x2450
100X4000	1000	4000	3100	320	120	100	380	≥8	7.5	6800	4300x1600x2450
125X3200	1250	3200	2600	320	120	100	380	≥8	7.5	6500	3400x1600x2450
125X4200	1250	4200	3100	320	120	100	380	≥8	7.5	7500	4300x1600x2450
160X3200	1600	3200	2600	320	200	150	460	≥6	11	9600	3500x1700x2700
160X4000	1600	4000	3100	320	200	150	460	≥6	11	11000	4300x1700x2800
160X5000	1600	5000	3900	320	200	150	460	≥6	11	15000	5500x1800x3000
160X6000	1600	6000	4800	320	200	150	460	≥6	11	18500	6500x1900x3200
200X3200	2000	3200	2600	350	200	150	460	≥3	15	11300	3500x1900x2800
200X4000	2000	4000	3200	350	200	150	460	≥3	15	13000	4500x1950x2800
200X5000	2000	5000	3900	350	200	150	460	≥3	15	14500	5500x1950x3000
200X6000	2000	6000	4800	350	200	150	460	≥3	15	21000	6500x1950x3300
250X3200	2500	3200	2600	400	250	180	500	≥3	18.5	13700	3500x2000x3200
250X4000	2500	4000	3100	400	250	180	500	≥3	18.5	15000	4500x2000x3400
250X5000	2500	5000	3900	400	250	180	500	≥3	18.5	17000	5500x2000x3400
250X6000	2500	6000	4800	400	250	180	500	≥3	18.5	18500	6500x2000x3400
300X4000	3000	4000	3100	400	250	180	530	≥3	22	21000	4500x2000x3450
300X5000	3000	5000	4000	400	250	180	530	≥3	22	22000	5500x2000x3450
300X6000	3000	6000	4800	400	250	180	530	≥3	22	24000	6500x2000x3550
400X4000	4000	4000	3100	400	250	180	600	≥2.5	30	28000	4500x2180x3400
400X5000	4000	5000	3900	400	250	180	600	≥2.5	30	30000	5500x2180x3900
400X6000	4000	6000	4800	400	250	180	600	≥2.5	30	34000	6500x2180x3900
500X4000	5000	4000	3100	400	320	220	630	≥2.5	37	42000	4500x2700x3500
500X5000	5000	5000	3900	400	320	220	630	≥2.5	37	45000	5500x2700x3700
500X6000	5000	6000	4800	400	320	220	630	≥2.5	37	47500	6500x2700x5000

BG FINGER MOVEMENT ON LM GUIDEWAYS



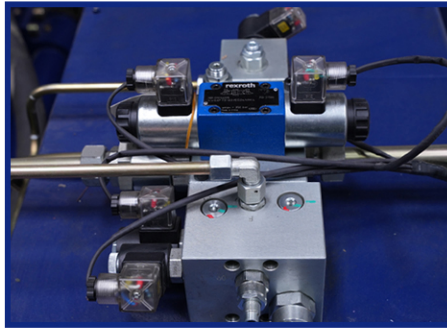
BALLSCREW AND LM GUIDEWAYS



TP10S CONTROLLER



HYDRAULIC SYSTEMS



RAM ADJUSTMENT



IMPORTED SEALS



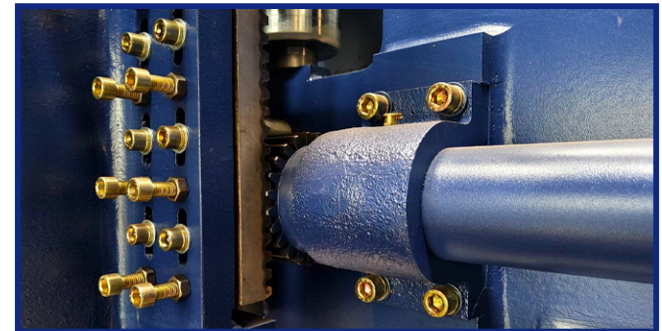
LINEAR POSITION SENSOR



CONTROL PANEL



RACK AND PINION



GMT ENGINEERS PVT LTD

H-7A, Krupa Colony, 1st Avenue, Ashok Nagar,
Chennai - 600 083, India.



+91 - 44 - 23711881
+91 - 44 - 24896028
+91 - 44 - 24892990



prasad@gmtengineers.com
chennai@gmtengineers.com



+91 - 98409 11881
+91 - 94446 78000



www.gmtengineers.com

Branch Office :

Coimbatore
+91 9840911884

Bangalore
+91 9677211887

Hyderabad
+91 9840911885

Kerala
+91 9840911882